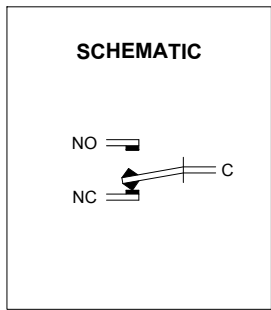
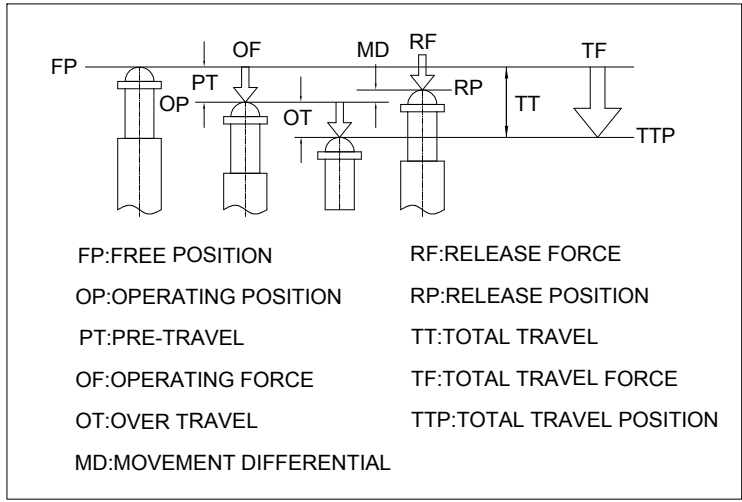
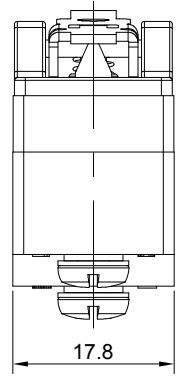
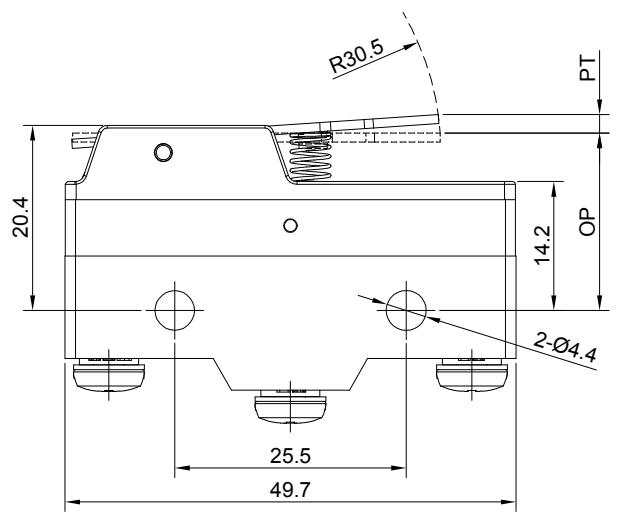
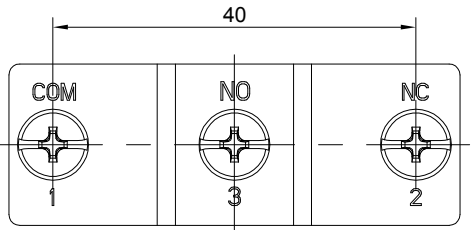


1 2 3 4 5 6 7

FOR 客户名称	APPROVED 客户确认签字	ATTN 销售负责人



TYPE	LTM-1702
OF Max.	160g
RF Min.	28g
PT Max.	3mm
OT Min.	2mm
MD Max.	1mm
FP Max.	24.8mm
OP	19±0.4mm

SPECIFICATIONS:

- SWITCH RATING: AC250V/15A, DC250V/0.03A.
- MECHANICAL LIFE: ≥10,000,000 cycles.
- ELECTRICAL LIFE: ≥50,000 cycles.
- CONTACT RESISTANCE: ≤200mΩ.
- INSULATION RESISTANCE: ≥100MΩ(500VDC).
- POWER-FREQUENCY WITHSTAND VOLTAGE:
 - BETWEEN DISCONTINUOUS TERMINAL: 1,000VAC, 50/60Hz, 1min;
 - BETWEEN CURRENT CARRYING PARTS AND NON-CURRENT CARRYING PARTS: 1,500VAC, 50/60Hz, 1min;
 - BETWEEN TERMINAL AND GND: 1,500VAC, 50/60Hz, 1min.
- OPERATING TEMPERATURE: -10°C~ +80°C(NO FREEZING).
- FRONT PANEL PROTECTION DEGREE: IP40.
- TERMINAL TYPE: SCREW TERMINAL.
- GENERAL TOLERANCE: 0-18mm=±0.25, 18-80mm=±0.52.
- COMPLIANT WITH RoHS.

- MATERIALS:**
- CONTACT: SILVER ALLOY.
 - ROCKER: STAINLESS STEEL.
 - BODY: UF.

PART NUMBER:LTM-1702

BRAND 品牌		红波按钮制造有限公司			
ONPOW 欧宝龙®		ONPOW PUSH BUTTON MANUFACTURE CO.,LTD.			
TITLE 名称	LTM-17 MICRO SWITCH		UNIT 单位	mm	
DWG NO. 图号	LTM-1702	SCALE 比例	1.2 : 1	SIZE 图纸	A4
FILE NAME 档案名称	LTM-17.DWG	DRAWN 制图	HCP 2025/04/07	SHEET 张	1/1
		REV. 版本	V1.0		

1 2 3 4 5 6 7