

40 Gbps USB Type-C™ Card Reader for CFexpress type B memory cards

Description

The card reader by Delock can be used for reading and writing **CFexpress memory cards**. The card reader can be connected to a PC or a mobile device via the USB interface. Thanks to the support of a maximum data transfer rate of up to **40 Gbps**, even large amounts of data - such as 8K video recordings or RAW image series - can be transferred extremely quickly. The card reader is therefore **ideal for professional users in the photo and video sector**.

Small, stable and handy

Due to its **small dimensions and its sturdy housing**, this Delock card reader is particularly suitable for travelling. It can simply be packed into the bag together with the laptop or tablet and used as needed.



Item no. 91021

EAN: 4043619910212

Country of origin: China

Package: Retail Box

Technical details

- Connectors:
 - 1 x USB 40 Gbps USB Type-C™ female
 - 1 x CFexpress 2.0 slot type B
- Push to push CFexpress socket
- Data transfer rate up to 40 Gbps
- Supports NVM Express (NVMe)
- Bootable
- 1 x LED indicator for power and access
- Power supply: Bus-powered
- Robust aluminum housing
- Colour: grey
- Plug & Play
- Dimensions (LxWxH): ca. 75 x 50 x 14 mm

System requirements

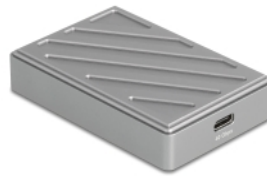
- Android 15.0 or above
- Linux Kernel 6.11 or above
- Mac OS 15.3.2 or above
- Windows 10/10-64/11

- iPad Air (4th Generation) or above
- iPad Pro (3rd Generation) or above
- iPhone 15 Pro or above
- Device with a free USB Type-C™ port or with a free Thunderbolt™ 3, Thunderbolt™ 4 or Thunderbolt™ 5 port

Package content

- Card reader USB Type-C™ to CFexpress
- Cable USB-C™ male to USB-C™ male, length ca. 30 cm
- User manual

Images



General

Function:	NVM Express (NVMe) Plug & Play bootable Push to push CFexpress socket
Supported operating system:	Windows 10 32-Bit Windows 10 64-Bit iPad Pro (3rd Generation) or above iPad Air (4th Generation) or above Windows 11 Android 15.0 or above Linux Kernel 6.11 or above Mac OS 15.3.2 or above

Interface

Connector 1:	1 x USB 40 Gbps USB Type-C™ male
Connector 2:	1 x CFexpress 2.0 slot type B

Technical characteristics

Data transfer rate:	40 Gbps
---------------------	---------

Physical characteristics

Housing material:	Aluminium
Cable length:	30 cm
Length:	75 mm
Width:	50 mm
Height:	14 mm
Colour:	grey

Manufacturer information

Street	Beeskowdamm 13/15
Postal code	14167
City	Berlin
Country	Deutschland

E-Mail	info@delock.de
Website	www.delock.de