

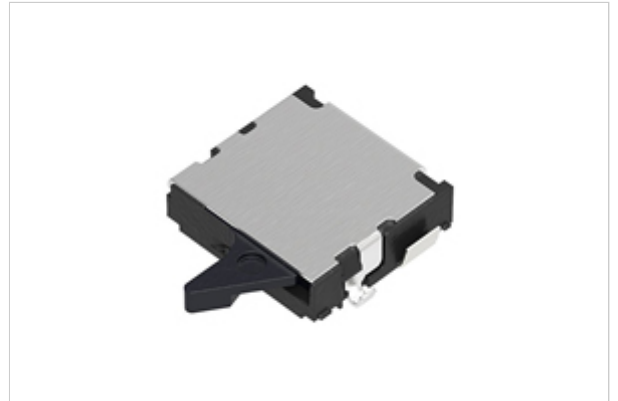
ALPSALPINE**ALPSALPINE**

X CLOSE

Detector Switch > SPVS Series > SPVS420100

Compact Two-way Operation Type SPVS Series

| [Dimensions](#) | [Backside](#) | [Land Dimensions](#) | [Terminal Layout](#) | [Circuit Diagram](#) |
 | [Packing Specifications](#) | [Soldering Conditions](#) |

Part number [Series Common Info](#)**SPVS420100**
 NET SHOP

 3D CAD

 RoHS

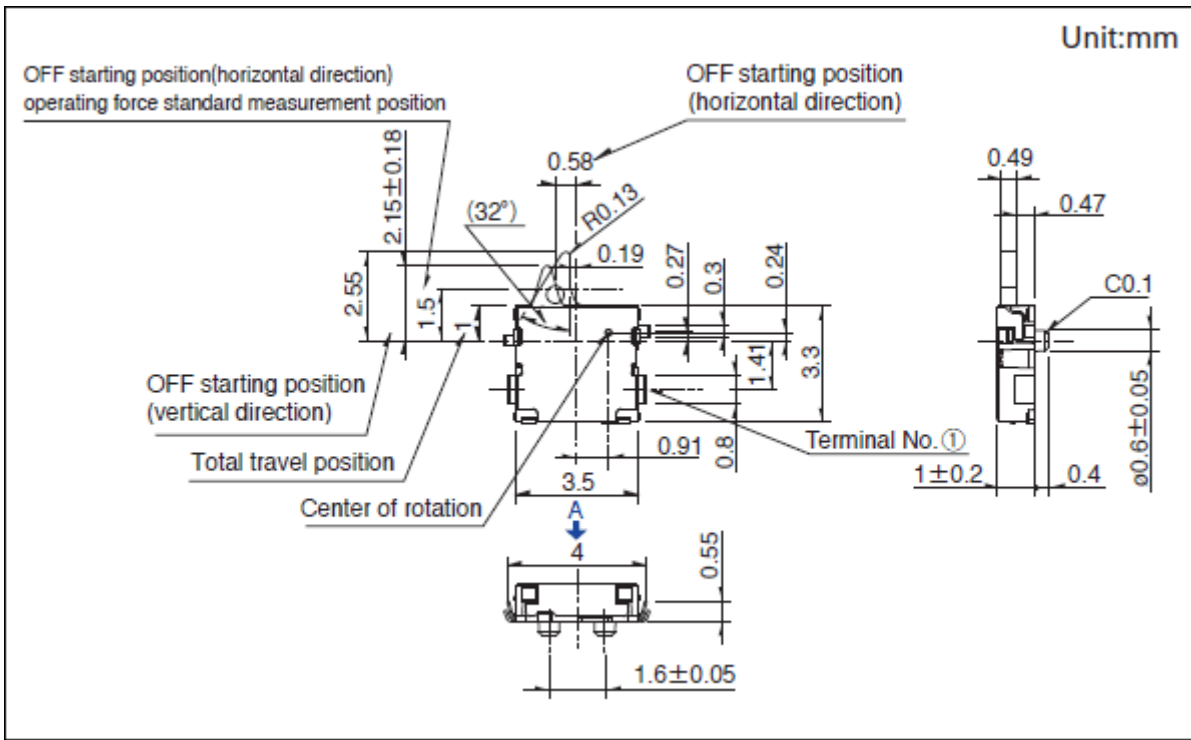
 Print

 Inquiry

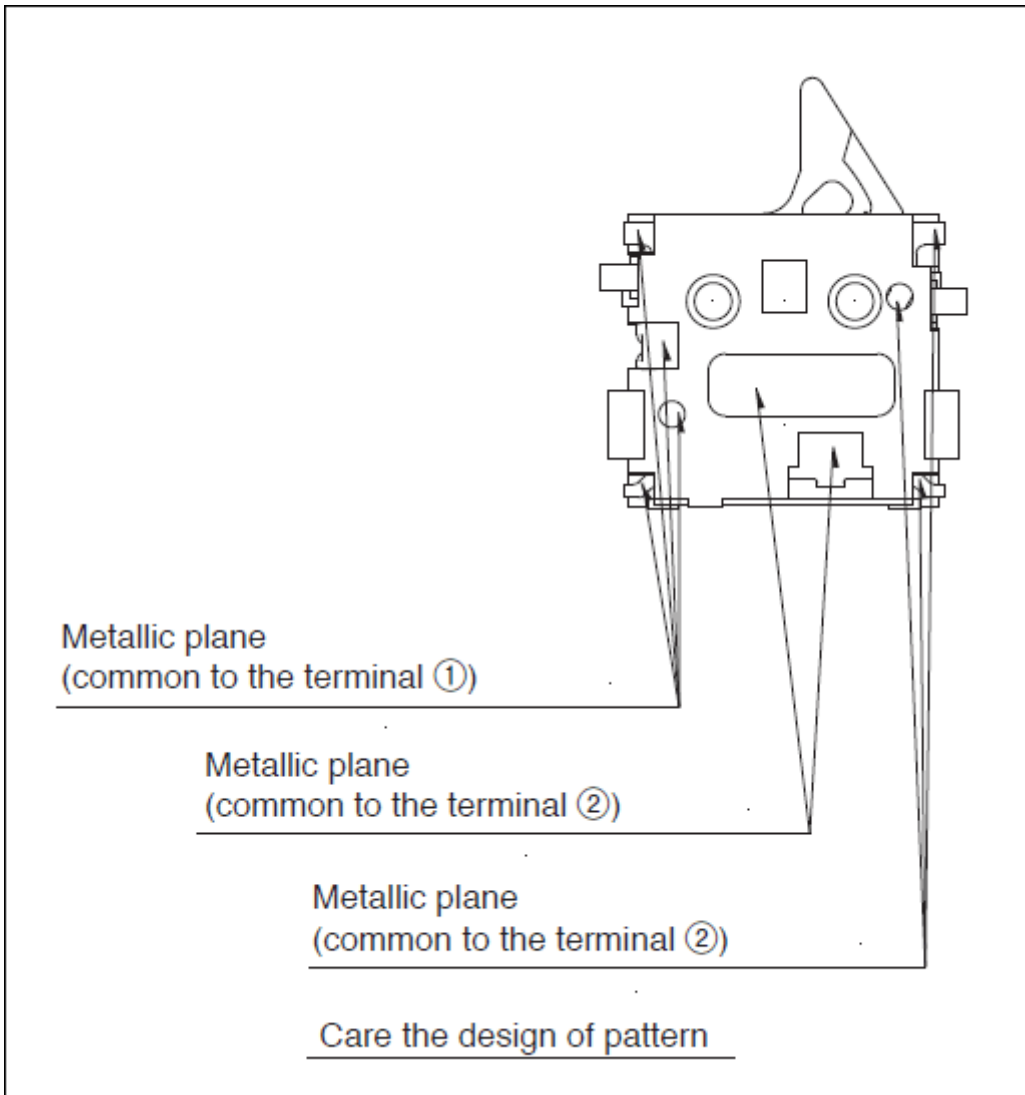
Poles	1
Positions	1
Terminal type	For PC board (Reflow)
Operating force	0.35N max.
Lever length	Standard
Operating direction	Left
Circuit	N/C
Location lug	With
Frame leg	With
Operating temperature range	-40°C to +85°C

Rating (max.)/(min.) (Resistive load)		1mA 5V DC/50 μ A 3V DC
	Contact resistance (Initial/After operating life)	2 Ω max./5 Ω max.
Electrical performance	Insulation resistance	100M Ω min. 100V DC
	Voltage proof	100V AC for 1 minute
Mechanical performance	Terminal strength	0.5N for 1 minute
	Actuator strength	5N
	Operating life without load	50,000 cycles 5 Ω max.
Durability	Operating life with load Rating (max.) (Resistive load)	50,000 cycles 5 Ω max.
	Cold	-40°C 96h
Environmental performance	Dry heat	85°C 96h
	Damp heat	40°C, 90 to 95%RH 96h
Minimum order unit (pcs.)	Japan 5,000 Export 20,000	

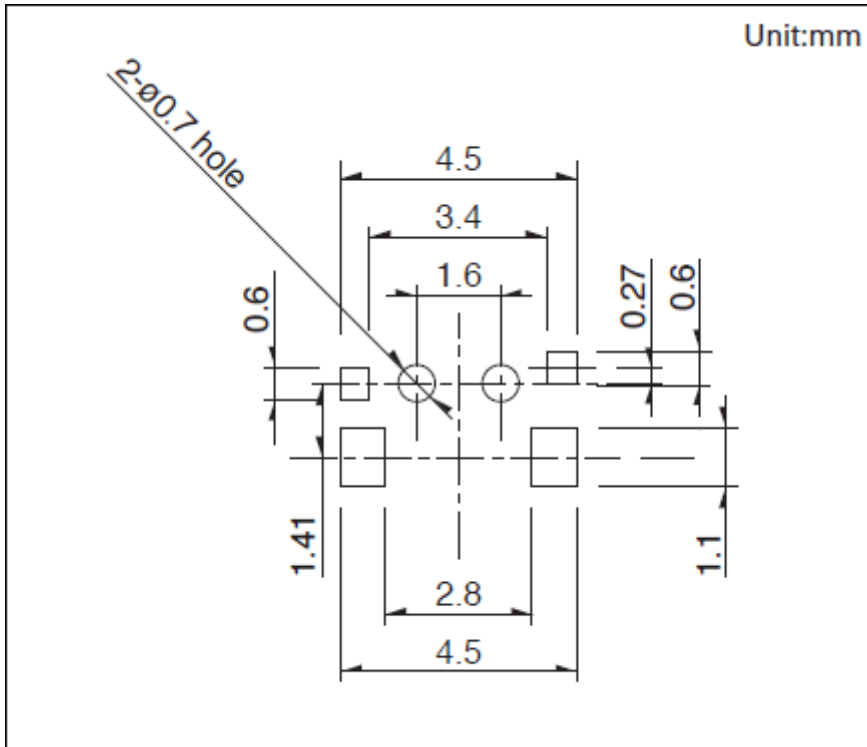
Dimensions



Backside

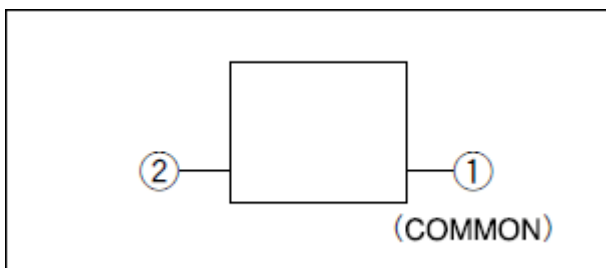


Land Dimensions

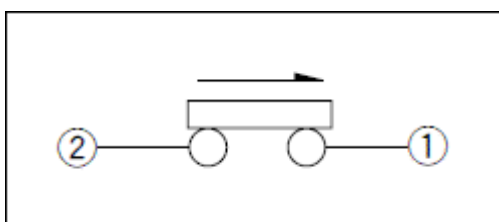


Viewed from direction A in the dimensions.

Terminal Layout

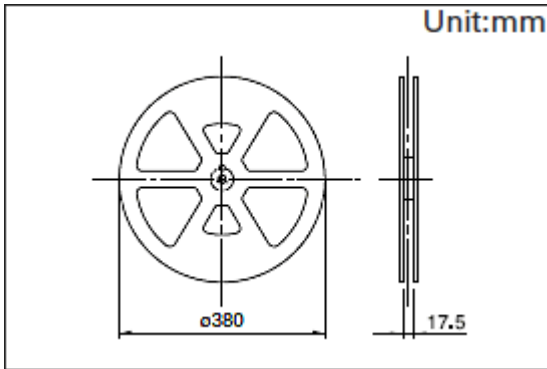


Circuit Diagram



Packing Specifications

Taping



	1 reel	5,000
Number of packages (pcs.)	1 case / Japan	10,000
	1 case / export packing	20,000
Tape width (mm)		16
Export package measurements (mm)	417 × 409 × 139	

Soldering Conditions

Example of Reflow Soldering Condition

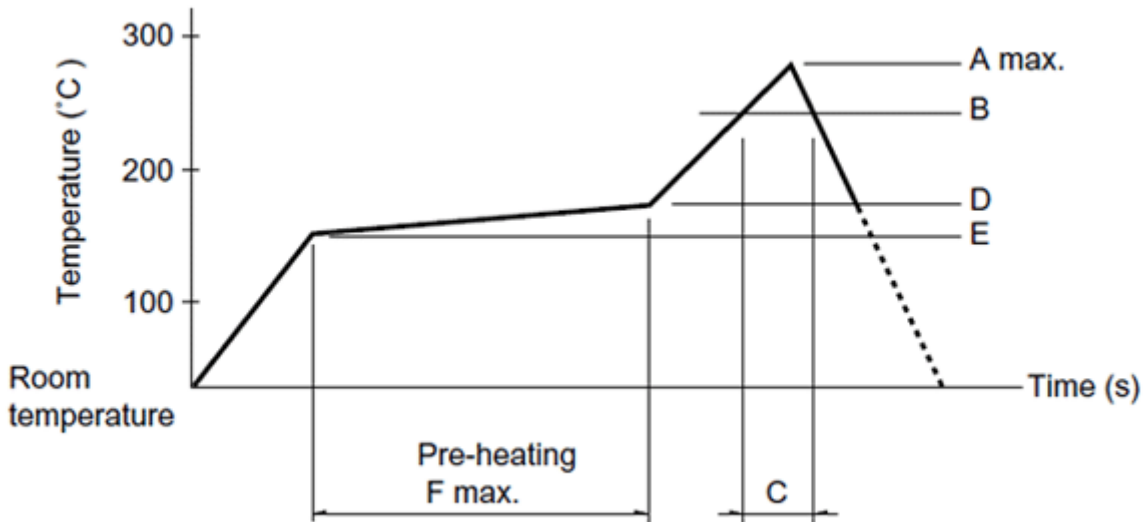
1. Heating method

Double heating method with infrared heater.

2. Temperature measurement

Thermocouple 0.1 to 0.2VCA (K) or CC (T) at soldering portion (copper foil surface) . A heat resisting tape should be used for fixed measurement.

3. Temperature profile



A(°C) 260
 B(°C) 230
 C(s) 40
 D(°C) 180
 E(°C) 150
 F(s) 120
 3s max.

- (1) The condition mentioned above is the temperature on the mounting surface of a PC board. There are cases where the PC board's temperature greatly differs from that of the switch, surface depending on the PC board's material, size, thickness, etc. The above-stated conditions shall also apply to switch surface temperatures.
- (2) Soldering conditions differ depending on reflow soldering machines. Prior verification of soldering condition is highly recommended.

Reference for Hand Soldering

Soldering temperature $350 \pm 5^\circ\text{C}$

Soldering time 3s max.

Notes are common to this series/models.

1. This site catalog shows only outline specifications. When using the products, please obtain formal specifications for supply.
2. Please place purchase orders per minimum order unit (integer).
3. This products can be used in vehicles.
 Although these products are designed to perform over a wide operating temperature range, please ensure that you receive and read the formal delivery specifications before use.

Inquiries about Products

[Inquiry](#)

COPYRIGHT© 2020 ALPS ALPINE CO., LTD