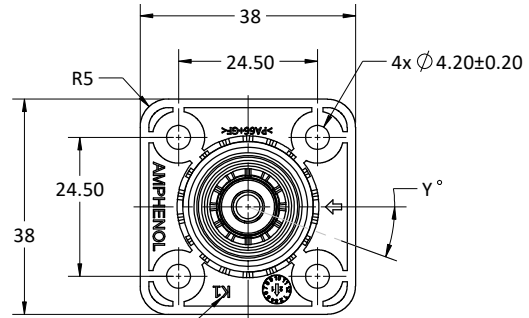
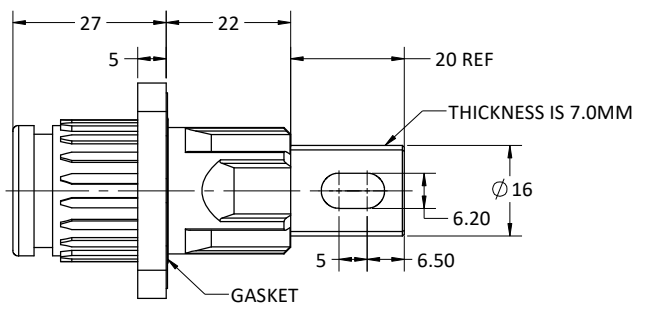


CUSTOMER DRAWING

REVISION		
REV.	DESCRIPTION	DATE
A	INITIAL RELEASE	2020/08/25
B	ADD CODE NUMBER AND KEYWAY	2020/12/22
C	UPDATE SPEC	2021/03/25
D	ADD BLUE OPTION	2022/06/08



KEYWAY CODE
SEE TABLE 1

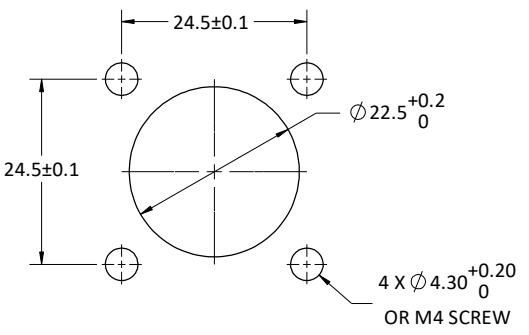


PART NUMBER: C10-765128- () () ()

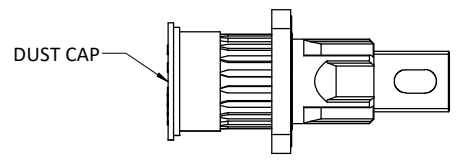
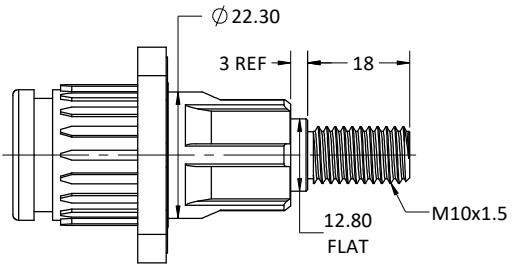
COLOR
PIN TYPE
KEYWAY
SEALING

CODE NUMBER: SLPHIRC() P() () ()

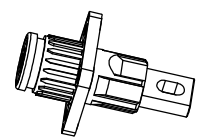
PIN TYPE
SEALING
KEYWAY
COLOR



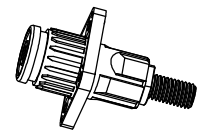
RECOMMENDED PANEL CUT OUT



DUST CAP ASSEMBLY VIEW



BUSBAR TYPE



SCREW TYPE

ITEM	OPTION	PART NUMBER	CODE NUMBER
COLOR	ORANGE	0	O
	BLACK	1	B
	RED	2	R
	BLUE	3	L
PIN TYPE	BUSBAR	1	B
	SCREW	2	T
SEALING	IP67(MATED)	0	S
	UNSEALING	1	N
KEYWAY (Y°)	20°	1	1
	30°	2	2
	45°	3	3

KEYWAY(Y°)	KEYWAY CODE
20°	K1
30°	K2
45°	K3

CURRENT RATING	300A
VOLTAGE RATING	1500V DC
OPERATING TEMPERATURE (AMBIENT)	-40°C~125°C
CONTACT RESISTANCE	0.5mΩ MAX
PROTECTION CLASS	IP67(MATED)

3. DUST CAP SHOULD BE REMOVED BEFORE PLUG MATING IN.
2. IF CHOOSE UNSEALING TYPE, THERE WILL BE NO GASKET.
1. THE REFERENCED PRODUCT SHALL BE COMPLIANT TO RoHS DIRECTIVE.

NOTES

THE USE OF THIS DOCUMENT IS UNLIMITED. HOWEVER, DOCUMENTS REFERENCED HEREON MAY CONTAIN LIMITED RIGHTS DATA.

N/A
Next Assembly

UNLESS OTHERWISE SPECIFIED	
LINEAR DIMENSIONS ARE IN MILLIMETERS	
TOLERANCES:	
DIM. RANGE	0.5-3 >3-6 >6-30 >30-120 >120-400
TOLERANCE	±0.1 ±0.1 ±0.2 ±0.3 ±0.5
ANGLES = ±2°	
DIM. & TOL. PER ASME Y14.5M-1994;	
DRM PER MIL-DTL-31000;	
OTHER AMPHENOL STANDARDS: 9-9318	
THIRD ANGLE PROJECTION	

APPROVALS		DATE
PREPARED BY:	YUEXIANG ZHANG	Aug-26-20
LEAD/PRODUCT ENGINEER:	SEVEN XIE	
ENGINEERING MANAGER:	ROB WENG	
PRODUCT GROUP:	C&I	
AIPG DIVISION:	AIO	

MATERIAL SPEC	PROCESS SPEC
N/A	N/A

AMPHENOL CORPORATION
Amphenol Technology (Zhuhai) Co. Ltd.
No. 63 Xingnan Road, Sanzao Town, Jinwan, Zhuhai, PRC

**10.3MM SURLOK PLUS RECEPTACLE
1500V TYPE**

SIZE	CAGE CODE	DOCUMENT NUMBER	REV
C	77820	10-765128	D

SCALE: 2:1 REF: 10-730191 SHEET 1 OF 1